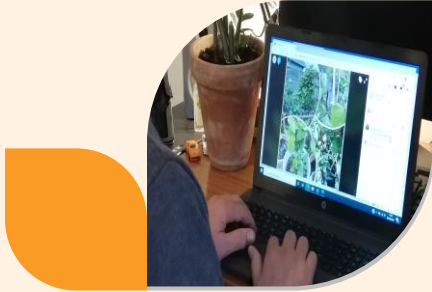


THE CART SHED CHARITY

MEMBERS OF HEREFORDSHIRE & WORCESTERSHIRE CHAMBER OF COMMERCE



UK BUSINESS HEROES
RECOGNISING BUSINESSES.
ONE STORY AT A TIME

Creating a 'Virtual Woodland' for those in need

The Cart Shed Charity created a 'virtual woodland' in response to Coronavirus, enabling the charity to continue to support over 100 individuals during lockdown.

Their team of traditional craftspeople and occupational therapists, familiar with ancient woodcraft tools such as billhooks, froes, shave-horses and pole lathes, found themselves having to learn how to use digital solutions to maintain contact with the people the charity supports.

Finding themselves in a critical situation, due to the high risk of suicide and self-harm amongst their clients, The Cart Shed had to create - at speed - a meaningful, purposeful programme that delivered a service which replicated what normally happened in the woods.

Having never delivered anything in the virtual environment, their team worked together to create a system that would work for those clients with very few IT skills. Many of their participants have limited or no access to IT, so they had to use systems the majority were familiar with. As such they developed a range of courses and set up a closed Facebook group for participants to access them. They also delivered activity packs to people's homes across the county.

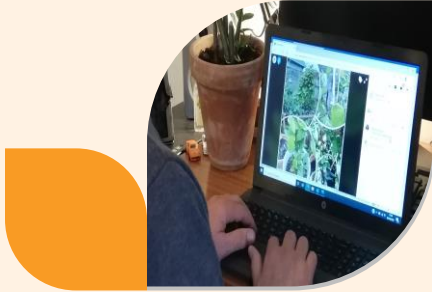
The Cart Shed Charity demonstrated that with ingenuity and access to basic technology, they could offer a first-class remote mental health 'therapeutic woodland' service to their existing client group and those who couldn't previously access their service.

They are now in the process of developing and enhancing their Virtual Woodland Therapeutic Programme, to enable them to maintain a service for those who continue to self-isolate, or who are unable to attend real life woodland sessions. This new service will extend their reach as they will be able to offer a county-wide service.

Cont...

THE CART SHED CHARITY

MEMBERS OF HEREFORDSHIRE & WORCESTERSHIRE CHAMBER OF COMMERCE



UK BUSINESS HEROES
RECOGNISING BUSINESSES.
ONE STORY AT A TIME

Creating a 'Virtual Woodland' for those in need

More generally they are working with health commissioners to see how best to implement these programmes for the benefit of the whole community, and eventually how this model could be replicated beyond Herefordshire.

'Since the Chamber's nomination, we've received funding from HM Government and the Lottery to develop our innovative ad hoc virtual woodland therapeutic service; exciting opportunities for Herefordshire in challenging times.'

**Katie Eastaugh, CEO,
The Cart Shed Charity**

'Their entire desire to adapt has been to save lives. We cannot commend them highly enough. Any adaptation in business is impressive, but one which preserves life, is astounding.'

**Sharon Smith, CEO,
Herefordshire & Worcestershire Chamber of Commerce**